



Virginia Railway Express

CHIEF EXECUTIVE OFFICER'S REPORT

June 2009

MONTHLY DELAY SUMMARY

	February	March	April	May
System wide				
Total delays	36	84	45	50
Average length of delay (mins.)	17	21	15	15
Number over 30 minutes	4	14	4	2
Days with Heat Restrictions/Total days	0/19	0/22	2/22	0/20
On-Time Performance	93.5%	86.8%	92.9%	91.4%
Fredericksburg Line				
Total delays	19	49	21	33
Average length of delay (mins.)	17	21	15	18
Number over 30 minutes	2	10	1	2
On-Time Performance	92.3%	82.9%	92.7%	87.3%
Manassas Line				
Total delays	17	35	24	17
Average length of delay (mins.)	16	21	15	11
Number over 30 minutes	2	4	3	0
On-Time Performance	94.4%	90.1%	93.2%	94.7%

SYSTEM RIDERSHIP

The total number of May trips in 2009 was 3.5% higher than in May 2008. There were nearly 500 more passengers this May compared to last May. We had one day over 17,000 trips and five days over 16,000 trips, showing that ridership growth is leveling off. The year-to-date gain through May in ridership was 6.3%.

SYSTEM ON TIME PERFORMANCE

System on time performance for May was still over 90% on-time. We have experienced over 90% on-time performance for four out of the five calendar months this year. However, OTP on the Fredericksburg Line dropped slightly below 90%. Only 10% of the delays were mechanical and 50% were related to train interference.

OPERATIONS AND MAINTENANCE CONTRACT

On May 8th, VRE issued the RFP for operating and maintenance services. A two-day mandatory pre-proposal meeting and site visit was held on Friday, May 29th and Saturday, May 30th. Sixteen companies attended the meetings. The first day included a review of the solicitation,

VRE office tour, and visit to the Ivy City facility. The second day included a full tour of the coach yards at Broad Run and Crossroads. Proposals are due on July 31st at 10:00am.

STIMULUS FUNDING

VRE submitted an application for locomotive funding to the FTA on May 22nd under the American Recovery and Reinvestment Act (ARRA) Transit Investments for Greenhouse Gas and Energy Reduction (TIGGER) program. A total of \$21.9 million was requested for the purchase of six additional replacement locomotives. The application demonstrated potential annual fuel savings of approximately 117,000 gallons and a 1,000 metric ton annual reduction in CO2 equivalent emissions if six of the existing locomotives are replaced with new equipment.

BROOKE PARKING EXPANSION UPDATE

Work on the Brooke station parking expansion resumed when the owner of the affected property allowed VRE to re-enter the site to complete the Phase II environmental study. Field work is scheduled to be completed the week of June 15th. The environmental consultant will then draft a Phase I/Phase II combined report for submittal to FTA. The report will take approximately two months to complete, with an additional 1-2 months review time by FTA. At that point, VRE can include a Memorandum of Agreement (MOA) that Phase III data recovery efforts will be performed prior to the start of construction. The MOA will allow the environmental document to be cleared so that design and right of way acquisition may begin using federal funds.

SPOTSYLVANIA PUBLIC MEETINGS

On June 11th Spotsylvania Board members will be holding a public meeting to discuss transportation, the 2% gas tax and VRE. Stephen MacIsaac, Al Harf, Mark Roeber and I will attend at the request of Supervisor Logan of Spotsylvania County. I will brief the Operations Board on the public meeting at the June 19th Operations Board meeting.

BURKE CENTRE STATION PLATFORM EXTENSION

The Burke Centre station platform extension project started construction on June 8, 2009. The Contractor, Grunley Walsh U.S., LLC, will extend the existing platform and canopy 200 feet to the west/south (behind parking garage). The surface parking lot to the west of the garage will be closed for six months, beginning on June 1, 2009. This area will be used for construction staging, equipment, and material storage. Riders will need to use the parking garage or the surface parking lot near the baseball field during this time.

BROAD RUN MAINTENANCE FACILITY

Construction of the Broad Run maintenance facility began on May 11, 2009. Construction will be completed in three phases: Phase I (open graded area for storage and parking); Phase II (utility installation within yard); and Phase III (S&I building construction). The work is expected to be completed in March 2010. At that time, VRE will have a new Service and Inspection building as well as lengthened tracks to store longer train sets. Plans for a train wash are currently also being developed for the Broad Run yard.

VRE ON TWITTER

VRE has entered the world of social networking. Several months ago, VRE's Facebook page was introduced, followed now by Twitter. Twitter, www.twitter.com, is a free site that allows VRE to provide service information along with other news such as upcoming events. Riders must register to receive VRE updates and tell us which type of device they would like the updates sent to. Standard text message rates will apply if messages are sent to a phone.

MANASSAS RAILWAY FESTIVAL

On Saturday, June 6th Historic Manassas Inc. hosted the 15th Annual Manassas Heritage Railway Festival from 10:00 a.m. until 4:00 p.m. at the historic Old Town Manassas train depot. Admission was free. Festivities included VRE excursion rides; model railroads; and adult stage featuring live bluegrass and country bands. Children's events were also provided and included professional entertainers and local talent, Thomas the Tank Engine Kiddie Train, kid's rides and face painting. VRE's excursion rides were offered every hour on the hour beginning at 11:00 a.m., with the last excursion ride departing at 3:00 p.m. The ride, which ran round-trip between Manassas and Clifton lasted about 35 minutes and cost \$6 (children under the age of two rode for free). Tickets were sold by Historic Manassas and VRE fees were paid up-front.

MEET THE MANAGEMENT

The annual "Meet the Management" events are on-going. The following schedule provides a list of remaining dates and locations.

June 17	Manassas Park	(am)	July 15	Rolling Road	(am)
June 24	Quantico	(am)	July 22	Woodbridge	(am)
July 1	Burke Centre	(am)	July 29	Backlick Rd.	(am)
July 8	Rippon	(am)	August 5	Lorton	(am)

MONTHLY PERFORMANCE MEASURES – MAY 2009

MONTHLY ON-TIME PERFORMANCE	ON-TIME PERCENTAGE
May Fredericksburg OTP Average	87.3%
May Manassas OTP Average	94.7%
VRE MAY OVERALL OTP AVERAGE	91.4%

RIDERSHIP YEAR TO DATE	RIDERSHIP
VRE FY 2009 Passenger Totals	3,508,820
VRE FY 2008 Passenger Totals	3,300,410
PERCENTAGE CHANGE	6.3%

RIDERSHIP MONTH TO MONTH COMPARISON	
DESCRIPTION	MONTHLY RIDERSHIP
MAY 2009	15,452
MAY 2008	14,926
PERCENTAGE CHANGE	3.5%
SERVICE DAYS (CURRENT/PRIOR)	20/20

Chief Executive Officer's Ridership Report



JUNE 2009

*As Reported to the VRE Operations Board
June 19, 2009*

Monthly Ridership and OTP: May 2009

Date	Manassas AM	Manassas PM	Total Manassas	Actual OTP TD	Fred'burg AM	Fred'burg PM	Fred'burg Total	Actual OTP TD	Total Trips	Actual OTP TD
1	3,313	3,068	6,381	100%	3,572	3,809	7,381	100%	13,762	100%
2										
3										
4	3,549	3,734	7,283	94%	3,693	4,119	7,812	100%	15,095	97%
5	4,050	4,346	8,396	94%	4,252	4,508	8,760	92%	17,156	93%
6	4,165	4,066	8,231	94%	4,301	4,074	8,375	92%	16,606	93%
7	3,906	3,813	7,719	100%	3,826	4,278	8,104	100%	15,823	100%
8	3,265	3,301	6,566	100%	3,390	3,376	6,766	69%	13,332	86%
9										
10										
11	3,637	3,655	7,292	94%	3,822	3,934	7,756	100%	15,048	97%
12	4,048	3,924	7,972	94%	4,096	4,658	8,754	100%	16,726	97%
13	3,910	3,820	7,730	88%	3,769	4,090	7,859	77%	15,589	83%
14	3,814	3,888	7,702	94%	4,188	4,195	8,383	100%	16,085	97%
15	3,152	3,209	6,361	100%	3,464	3,794	7,258	100%	13,619	100%
16										
17										
18	3,799	3,742	7,541	94%	3,951	4,075	8,026	92%	15,567	93%
19	3,770	3,980	7,750	100%	3,913	4,202	8,115	92%	15,865	97%
20	3,823	3,930	7,753	88%	3,908	4,040	7,948	62%	15,701	76%
21	3,965	3,808	7,773	100%	3,776	4,440	8,216	92%	15,989	97%
22	3,045	2,832	5,877	100%	3,461	3,766	7,227	77%	13,104	90%
23										
24										
25										
26	3,840	3,917	7,757	81%	3,867	3,795	7,662	77%	15,419	79%
27	4,006	3,992	7,998	100%	4,027	4,211	8,238	92%	16,236	97%
28	4,082	4,037	8,119	81%	4,062	4,245	8,307	69%	16,428	76%
29	3,360	3,141	6,501	100%	3,674	3,965	7,639	62%	14,140	83%
30										
31	74,489	74,203	148,702	95%	77,012	81,574	158,586	87%	307,288	91%
	Adjusted total:	Adjusted total:	Adjusted total:		Adjusted total:	Adjusted total:	Adjusted total:	Adjusted total:	Adjusted total:	Adjusted total:
	74,489	74,203	148,702	95%	77,012	81,574	158,586	87%	307,288	91%
			148,743				160,297		309,040	

# of Service Days:	20	Total Trips This Month:	309,040	Adjusted Total:	309,040
Manassas Daily Avg. Trips:	7,435	Prior Total FY-2009:	3,199,780		
Fred'burg Daily Avg. Trips:	7,929	Total Trips FY-2009:	3,508,820		
Total Avg. Daily Trips:	15,364	Total Prior Years:	40,596,336		
		Grand Total:	44,107,156		

Note: Adjusted Averages & Totals include all VRE trips taken on Amtrak trains, but do not include "S" schedule days.
 * designates "S" schedule day

Monthly Ridership Changes: Fiscal Year 2008 vs. 2009

Current Month	MANASSAS			FREDERICKSBURG		
	Avg Daily FY2008	Avg Daily FY2009	% change	Avg Daily FY2008	Avg Daily FY2009	% change
July	6513	7003	7.52%	7393	8388	13.46%
August	6405	6885	7.49%	7379	8316	12.70%
September	6847	7495	9.46%	7652	8720	13.96%
October	6973	7491	7.43%	7754	8538	10.11%
November	6894	7330	6.32%	7707	8439	9.50%
December	6081	7158	17.71%	7235	8584	18.65%
January	6978	7610	9.06%	8148	8501	4.33%
February	6842	7578	10.76%	8018	8375	4.45%
March	6812	7568	11.10%	8050	8194	1.79%
April	6988	7427	6.28%	8324	8196	-1.54%
May	6832	7437	8.86%	8094	8015	-0.98%
June	7123			8504	0	
Average growth			9.27%			7.86%
						8.48%

*Ridership figures are shown in passenger trips. Includes Amtrak cross honor train riders.

**Average daily ridership for May 2008 does not include 5/30/08 due to planned service disruption.

Chief Executive Officer's Report



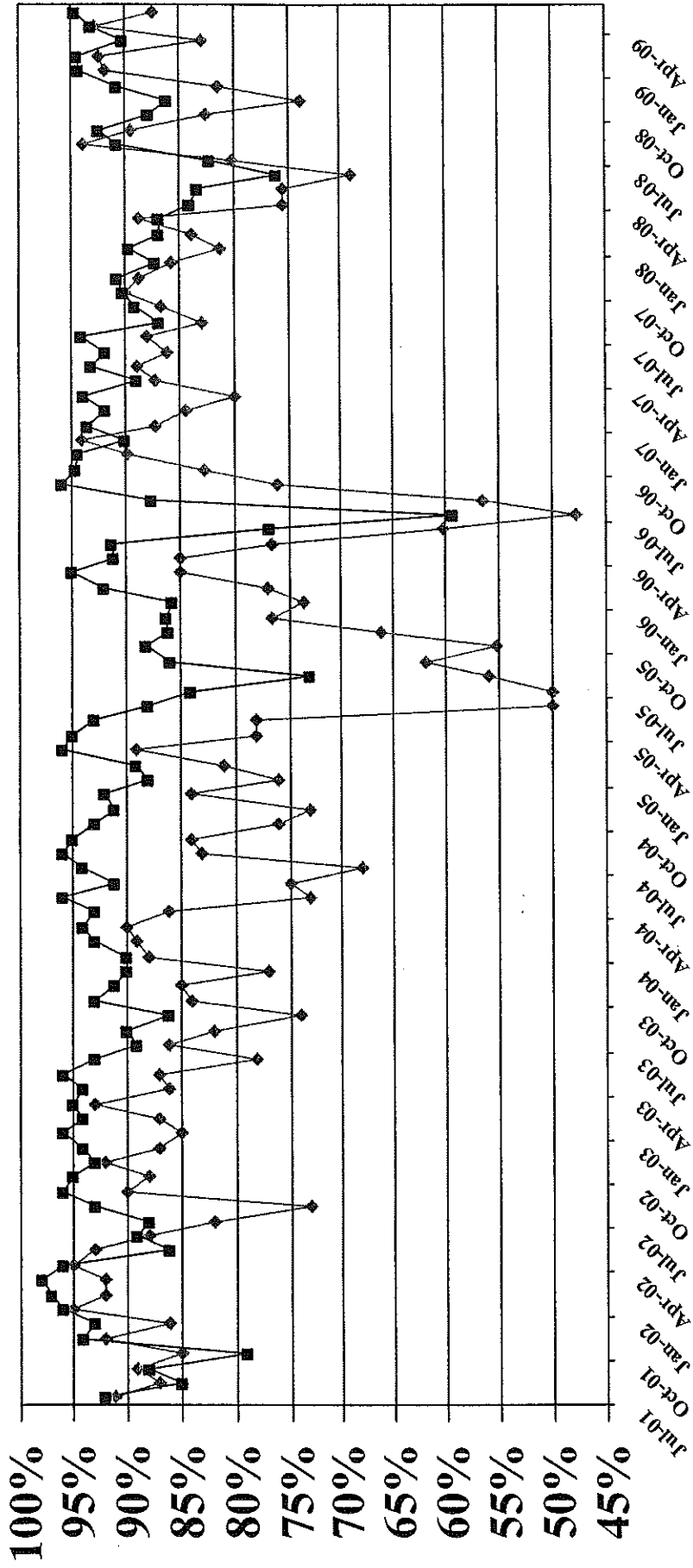
Chief Executive Officer's On-Time Performance

JUNE 2009

*As Reported to the VRE Operations Board
June 19, 2009*

On-Time Performance

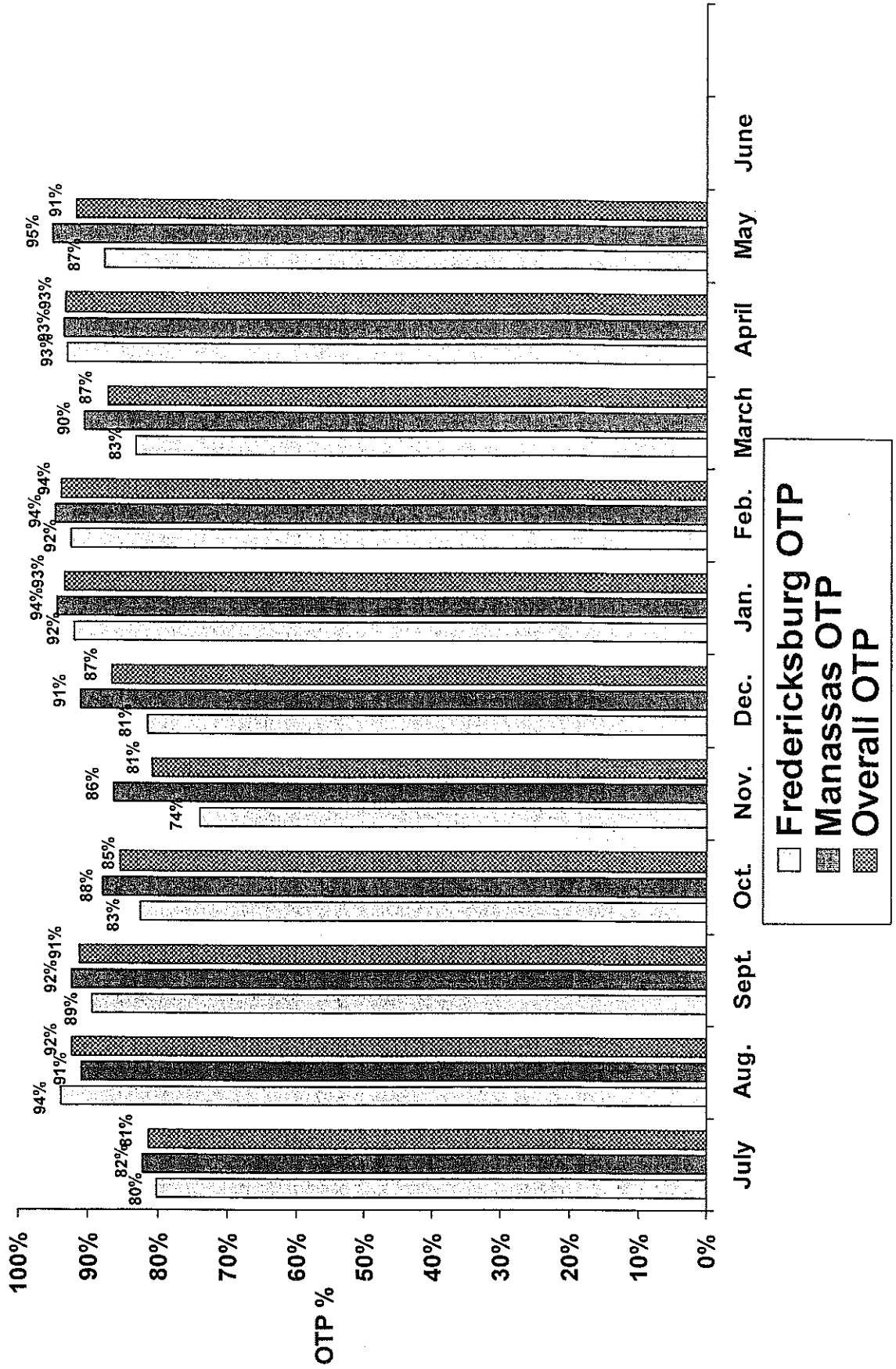
July 2001 – May 2009



◆ Fredericksburg Line ■ Manassas Line

Average On-Time Performance

FY-2009



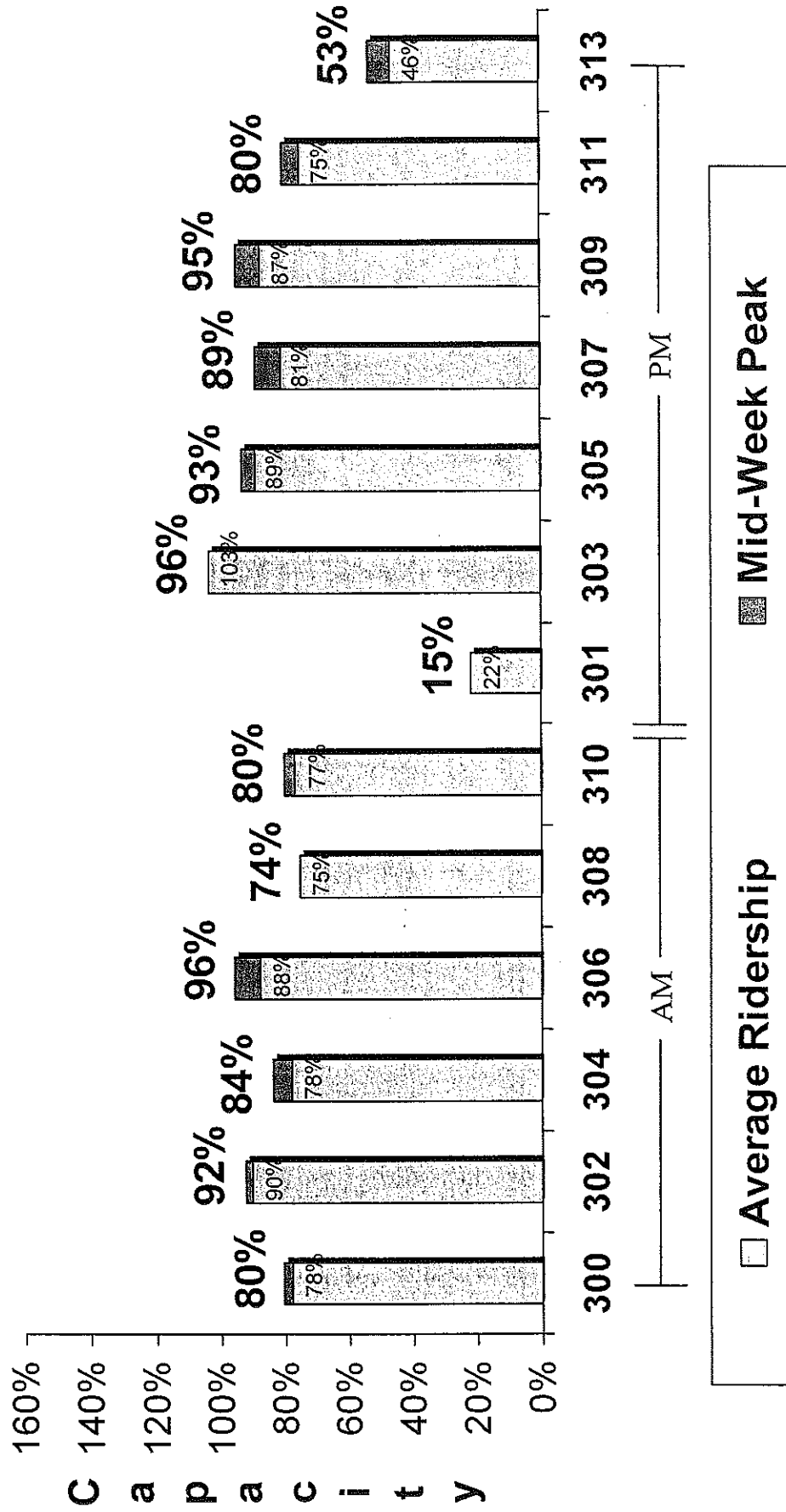
Chief Executive Officer's Train Utilization



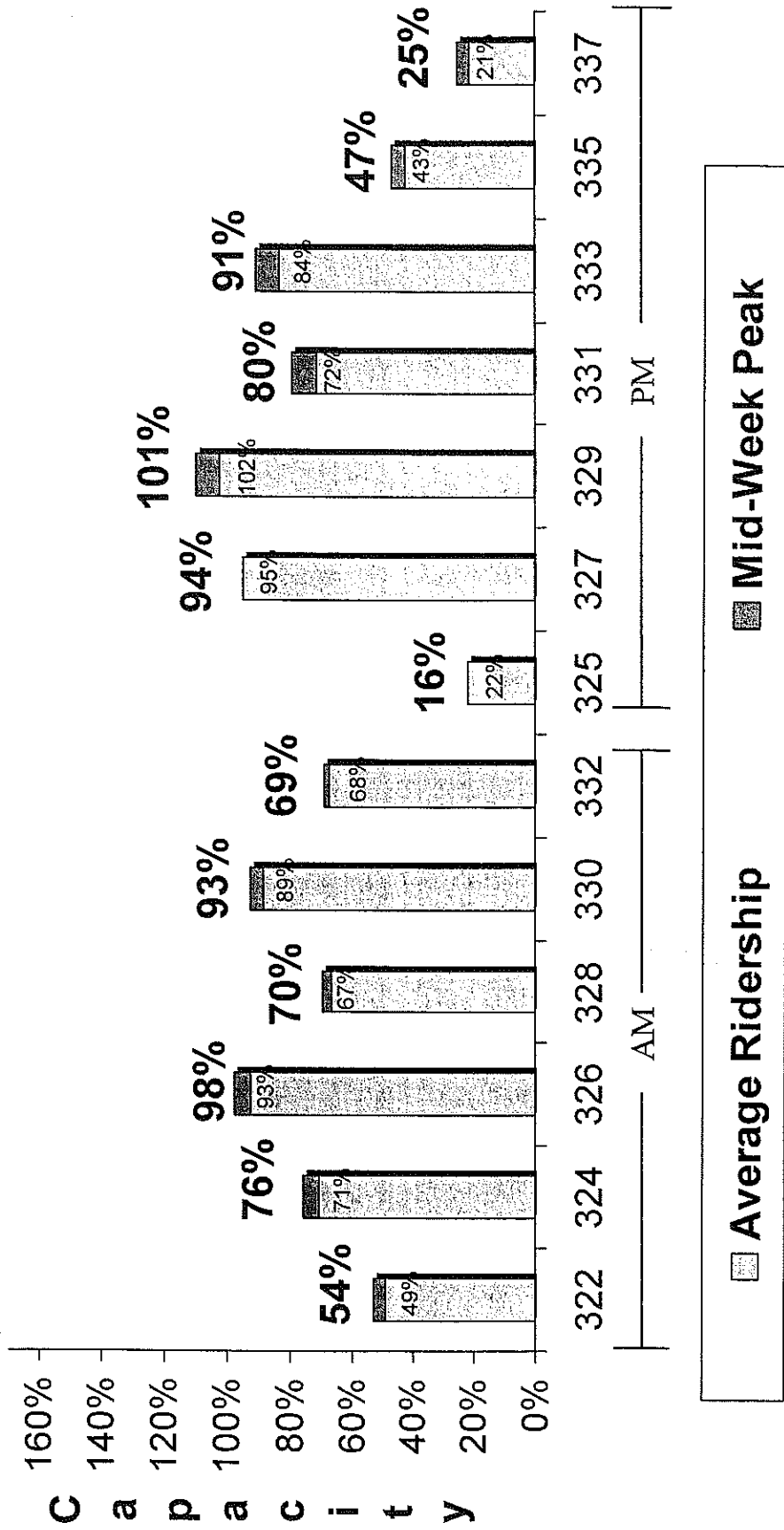
JUNE 2009

*As Reported to the VRE Operations Board
June 19, 2009*

Train Utilization: Fredericksburg Line – May 2009



Train Utilization: Manassas Line – May 2009



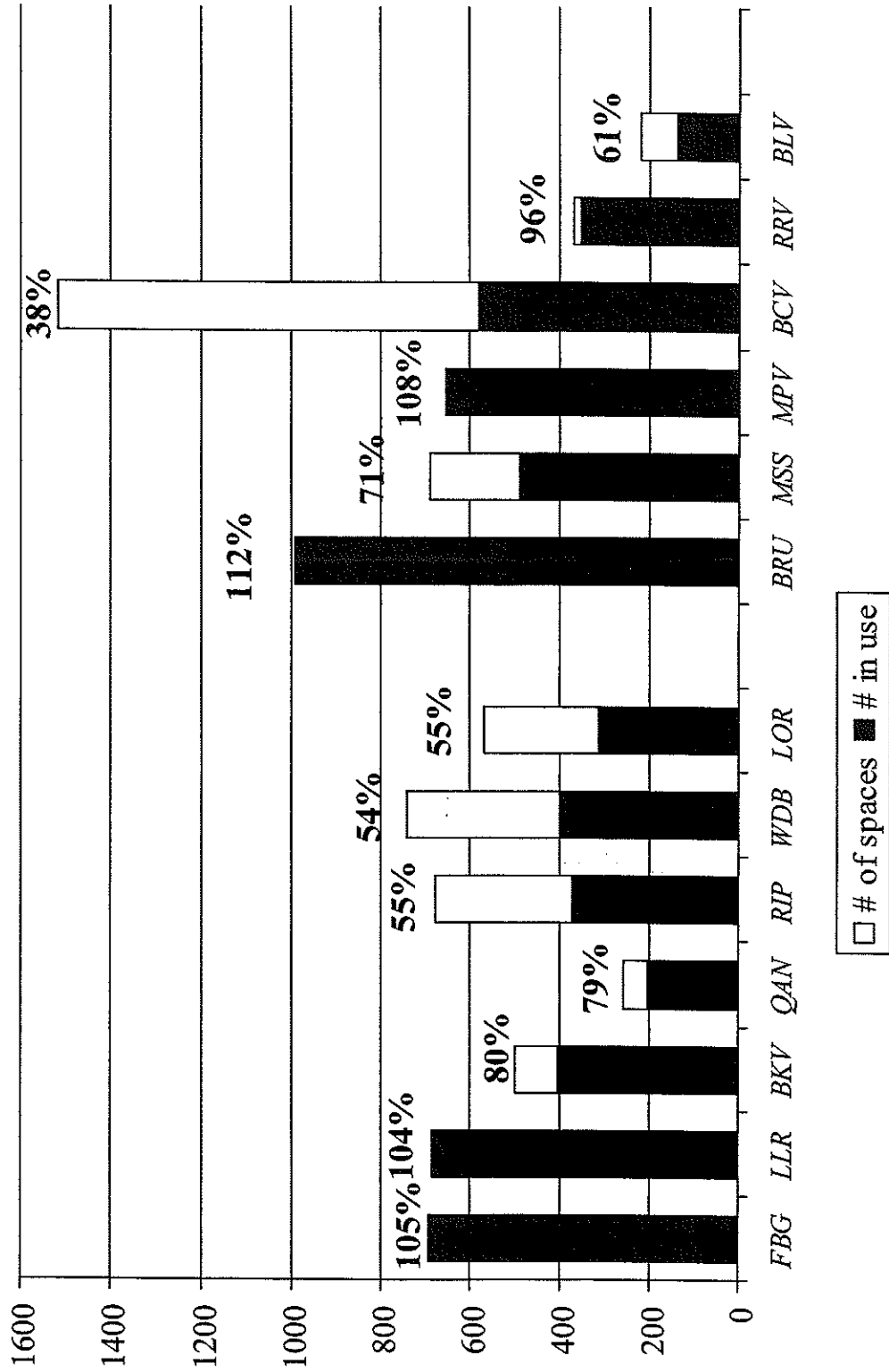
Chief Executive Officer's Parking Utilization



JUNE 2009

*As Reported to the VRE Operations Board
June 19, 2009*

Parking Lot Utilization: May 2009



Chief Executive Officer's Financial Report



JUNE 2009

*As Reported to the VRE Operations Board
June 19, 2009*

FINANCIAL STATISTICS FOR MAY 2009

Copies of the May 2009 Operating Budget Report are attached.

Fare income for the month of May 2009 was \$110,987 above the budget – a favorable variance of 5.42%. The cumulative variance for the year is 5.44% or \$1,210,108 above the amended budget. Revenue in the first eleven months of FY 2009 is up 18.0% over FY 2008. This positive variance is the result of higher than anticipated ridership.

A summary of the financial results (unaudited) as of May 2009 follows. Detail on the major revenue and expense categories are provided in the attached Operating Budget Report.

A year-end projection is also attached, along with an investment report through the end of April, the most recent report available.

Measures		Goal	Actual	Trend
Operating Ratio		55%	70%	↑
Budgeted Revenue	67,653,913			
Budgeted Revenue YTD	62,953,704			
Actual Revenue YTD	64,496,519			
Cumulative Variance	1,542,815		1,542,815	↑
Percent Collected FY 07 YTD		93.05%	95.33%	
Budgeted Expenses	67,653,913			
Budgeted Expenses YTD	58,172,801			
Operating Expenses YTD	56,500,545			
Cumulative Variance	1,672,256		1,672,256	↑
Percent Collected FY 07 YTD		85.99%	83.51%	
Net Income (Loss) from Operations			3,215,071	↑

These figures are preliminary and unaudited.

VIRGINIA RAILWAY EXPRESS
FY 2009 Operating Budget Report
May 31, 2009

	CURR. MO. ACTUAL	CURR. MO. BUDGET	YTD ACTUAL	YTD. BUDGET	YTD VARIANCE \$	YTD VARIANCE %	TOTAL FY09 BUDGET
OPERATING REVENUE							
Passenger Ticket Revenue	2,160,385	2,049,398	23,460,710	22,250,602	1,210,108	5.4%	24,300,000
Equipment Rental and Other	4,456	12,777	327,564	138,723	188,841	136.1%	151,500
Subtotal Operating Revenue	2,164,841	2,062,175	23,788,274	22,389,325	1,398,949	6.2%	24,451,500
Jurisdictional Subsidy (1)	-	-	16,361,819	16,361,819	-	0.0%	16,361,819
Federal/State/Other Jurisdictional Subsidy	2,758,237	2,660,117	24,233,426	24,042,319	191,107	0.8%	26,630,594
Appropriation from Reserve	-	-	-	-	-	0.0%	-
Interest Income	4,290	14,759	113,001	160,241	(47,240)	-29.5%	210,000
Total Operating Revenue	4,927,368	4,737,051	64,496,519	62,953,704	1,542,816	2.5%	67,653,913
OPERATING EXPENSES							
Departmental Operating Expenses	3,597,627	3,996,996	41,953,201	43,590,597	1,637,396	3.8%	48,736,978
Debt Service	602,341	606,545	10,683,029	10,732,711	49,682	0.5%	13,487,241
Insurance	-	-	3,849,493	3,849,493	-	0.0%	4,400,000
Other Non-Departmental Expenses	793	-	14,822	-	(14,822)	-	1,027,694
Total Operating Expenses	4,200,761	4,603,541	56,500,545	58,172,801	1,672,256	2.9%	67,653,913
NET INCOME (LOSS) FROM OPERATIONS							
	726,607	133,509	7,995,974	4,780,903	3,215,072		0
CALCULATED OPERATING RATIO							
			70%				

(1) Total jurisdictional subsidy is \$17,275,500. Portion shown is attributed to Operating Fund only.

FY 2009 YEAR-END FINANCIAL PROJECTION

Each month, the VRE Operations Board receives financial information in summary form which shows year-to-date actual to budgeted fare revenue, grant revenue, and operating expenses. In December of each year, a revised budget for the year is prepared, based on the most current information as of that date. In December 2008, the Amended FY 2009 Budget was presented to the Board.

YEAR-END PROJECTION

The information below is a projection of year-end revenue and expenses for FY 2009. The results of operations at year-end are anticipated to be a surplus of \$2.4M. Major points are as follows:

- *Fare Revenue* estimated to be over \$1M above the budgeted amount, assuming ridership remains stable
- Diesel fuel costs are estimated to be materially close to the adopted budget
- *Debt Service* estimated to be \$800K under budget, due to the timing of the borrowing for the 50 railcars. As a result, the related grant revenue for June is also under budget.
- Additional funds allotted to *Equipment Operations*, in the event of additional locomotive repairs by year end
- Additional funds allotted to *Amtrak*, in the event of unforeseen expenditures. Amtrak monthly costs are estimated until invoices are received, which lags by several months. Funding is also in place for the strike settlement.

The chart below summarizes actual to budget data by major category:

FY09 Year End Operating Budget Projection (in millions)				
Description	Revised Budget	Current Estimate	Variance	%
Fare Revenue	24.3	25.6	1.3	5.1%
Local Subsidy*	16.4	16.4	-	0.0%
Grant Revenue	26.6	26.2	(0.4)	-1.5%
Other Revenue	0.3	0.4	0.1	25.0%
Total Revenue	67.6	68.6	1.0	1.5%
Operating Expenses	53.7	53.1	0.6	1.1%
Debt Service	13.5	12.7	0.8	6.3%
Contr to Operating Rsrv	0.4	0.4	-	0.0%
Total Expenses	67.6	66.2	1.4	-2.1%
Net Income (loss)	-	2.4	2.4	

*The local subsidy amount shown here is the amount needed for operations; total subsidy is \$17.3M.

VRE Investment Portfolio
As of April 30, 2009

Investment Type	Institution	Amount	Comments	Rate
Money market fund - overnight sweep	Suntrust Bank	662,000	Disbursement account	0.10% (1)
LGIP (Local Government Investment Pool)	LGIP	7,439,379	Operating reserve, Mafersa proceeds and general funds	0.89% (1)
<i>Project Funds</i>				
LGIP (Local Government Investment Pool)	LGIP	238,868	Sale of Kawasaki Rail Cars Proceeds	0.89% (1)
LGIP (Local Government Investment Pool)	LGIP	52,467	Revolving account for small liability claims	0.89% (1)
Money market fund	U.S. Bank	4,731,750	Funds held by bond trustee until next payment date	0.000014%
Insurance trust fund	DRM	<u>7,732,080</u>	Amount as of 3/31/2009	N/A
Total portfolio		20,856,545		

(1) Monthly average.

Percentage of portfolio:

LGIP	37%
Money market fund	26%
Insurance trust fund	37%

Chief Executive Officer's Capital Project Summary



JUNE 2009

*As Reported to the VRE Operations Board
June 19, 2009*

**VIRGINIA RAILWAY EXPRESS
CAPITAL PROJECTS - PROGRESS REPORT
Projects Underway in FY09 As of
June 1, 2009**

PROJECT	LOCATION	TOTAL ADOPTED CIP BUDGET THRU FY09	TOTAL BOARD APPROVED FUNDS	PROJECT DESCRIPTION	PERCENTAGE (%) OF TOTAL PROJECT TASK COMPLETION	PROJECT COMPLETION DATE	STATUS
Track and Infrastructure							
Cherry Hill Third Track	Cherry Hill, Virginia	\$2,500,000		This project includes the development of VRE's 13th station on the Fredericksburg Line. The VRE station is part of a larger development project on the Cherry Hill Peninsula. Proposed 3rd track will extend from MP 72.0 to MP 83.4.	60%	3rd Quarter 2009	CSX provided comments to preferred track alignment alternative. No major issues to date. Draft EA provided and VRE currently reviewing. EA expected to be forwarded to DRPT by July 15. Geotech field work on hold pending flagging availability.
Cherry Hill Third Track PE/EA			\$1,961,709	Prepare an environmental assessment and preliminary design for track alternatives and supporting structures.			
Cherry Hill Third Track PE/EA Support			\$272,747	Provide flagging services and design reviews.	60%	3rd Quarter 2009	CSX developing signal design and cost estimates.
L'Enfant Storage Track				Construct approximately 1400 ft storage track just north of the existing platform and provide wayside power for two train sets.			
L'Enfant Storage Track Construction			\$630,000	Construct approximately 1400 ft storage track just north of the existing platform	100%	Completed	Siding construction completed in late September. Passed CSX inspection upon completion. Paid final invoice (\$139,198.17).
L'Enfant Storage Track Wayside Power Design	L'Enfant	\$825,000	N/A	Design of wayside power for two train sets.	90%	2nd Quarter 2009	HDR to modify design based on pending CSX approval of conduit installation on catenary tower vs. under tracks. Grant extension until 9/30/09 approved by FEMA. Additional grant funds (\$300K) expected to be available shortly - will have until May 31, 2010 to use funds. CSX Wireline department indicated preliminary approval to install conduits and air line on existing catenary tower vs. under tracks. VRE submitted plan on 5/15/09 for CSX approval. Location of compressor building will shift to east side of tracks to eliminate track clearance issues.
L'Enfant Storage Track Wayside Power Construction			N/A	Construction of Wayside Power	20%	3rd Quarter 2009	
L'Enfant Storage Track Wayside Power Air Compressor Procurement			N/A	Procure and oversee installation of air compressor equipment for new storage track air system through Virginia state procurement process (eVA).	90%	3rd Quarter 2009	Procurement process has been completed. Air compressor system has been delivered and is being stored at Crossroads Yard.
Cab Signal Installation from CP RO to CP Virginia Avenue	Virginia / Washington, D.C.	\$1,260,000	\$1,260,000	Installation of cab signals from MP CFP 110.1 to MP CFP 112.2.	0%	4th Quarter 2009	Force account agreement executed on 4/27/09.
Planning Studies and Communications Projects							
SmartTrip Technical Support Proj. No. 1310 020	VRE offices/ system wide	\$155,000	\$154,285	Technical assistance for the design, procurement, installation and testing of a SmartTrip compatible system for VRE.	31%	4th Quarter 2010	Negotiating final contract with S&B; S&B comments will be addressed in special T&C. Existing contract general terms and conditions will carry forward to contract amendment. Smart Benefits pilot continues.

Note 1: Total adopted CIP budget will be revised upon receipt of FY09 grant.

**VIRGINIA RAILWAY EXPRESS
CAPITAL PROJECTS - PROGRESS REPORT
Projects Underway in FY09 As of
June 1, 2009**

WUT Train Movement Study	Washington, D.C.	\$180,000	\$179,677	Investigate train movements in WUT, Ivy City and Coach Yard and allocate cost to utilize the facility.	99%	4th Quarter 2008	Negotiations underway.	
2-Way Radio System				To install a radio communication system that will allow monitoring of train communication and communication with trains during emergencies.				
2-Way Radio System Design	System-wide	\$346,400	\$98,000	Design and develop RFP for new two-way radio system	100%	Completed	Design completed.	
2-Way Radio System Construction			\$248,400	Installation of new two-way radio system	97%	1st quarter 2010	System encountering interference. Bearcom is testing whether system will work in current location (likely to suggest alternate location in Alexandria); VRE & MATHC submitted response package to Stafford County staff comments.	
Gainesville Haymarket MIS	New Line	\$1,537,340	\$1,537,338	Develop expansion alternatives for new service to Gainesville and Haymarket.	90%	4th Quarter 2009	Final Alternatives Analysis report completed 5/29/09. Feasibility Study scheduled for completion 6/09.	
Commuter Station Projects								
Fredericksburg Viaduct Repairs								
Fredericksburg Viaduct Repairs Design	Fredericksburg	\$2,606,000	NA	Develop scope of work to address spalling concrete and drainage with available funding	100%	Completed	Final report submitted to VRE on May 15, 2007.	
Manassas City Parking Deck			\$148,281	Develop detailed design to address necessary repairs	50%	2nd Quarter 2009	60% design under review. Met with City to coordinate utility and ARB review. Forwarded Plans to CSX for review.	
Manassas City parking Deck Environmental				Construction of a 520 space parking garage in the City of Manassas.				
Manassas City parking Deck Design			\$170,675	Preliminary work (site location/environmental) for future garage parking.	100%	Completed	Completed	
Manassas City parking Deck Construction	Manassas, Virginia	\$12,750,000	\$598,534	Design and limited construction administration for 520+ space parking structure.	100%	4th Quarter 2008	PB resubmitted revised as-buills to City of Manassas as requested for issuance of Certificate of Occupancy.	
Manassas City parking Deck Security Camera Installation			\$9,189,400	Construction of Parking Garage	98%	2nd Quarter 2009	Punch list items essentially complete, with exception of minor leak repairs. VRE reviewing closeout submittals. Canopy extension plans have been resubmitted to City Building Department incorporating minor plan review comments. Approval expected this week. VRE is coordinating with NS for provision of flagman. Site survey completed; drawings approved by VRE and City of Manassas. Quote obtained from sole source ADT Advanced Integration. Received Board approval at February meeting. Preconstruction meeting held 3/24/09 followed by site visit on 3/26/09. Work to begin once paperwork completed - estimated six weeks for installation. VRE currently responding to contractor's questions on general terms & conditions.	
			\$0	Installation of Security Cameras on Interior and Exterior of Parking Garage	5%	3rd Quarter 2009		

Note 1: Total adopted CIP budget will be revised upon receipt of FY09 grant.

**VIRGINIA RAILWAY EXPRESS
CAPITAL PROJECTS - PROGRESS REPORT
Projects Underway in FY09 As of
June 1, 2009**

Manassas City Parking Deck Electrical Line Relocation		\$416,000	Relocate high voltage line along Prince William Street	100%	Completed	Relocation of new pole and transmission line work complete. Paid final Dominion invoice (\$157,060.23).
Woodbridge Station Expansion			This project includes a Kiss & Ride, Second Platform & Pedestrian Crossover - which will join the parking garage and Second Platform.			
Woodbridge Station Expansion Design	Woodbridge, Virginia	\$910,000	Design and limited construction administration for second platform, pedestrian crossover and elevator/stair tower.	100%	3rd Quarter 2007	Improvements to Route 1 in VDOT right-of-way eliminated, along with sidewalk connection from Route 1 to elevator/stair tower. These improvements to be addressed during later phase of project. Received PWC final site plan approval on 5/13/08.
Woodbridge Station Expansion Track Relocation	Woodbridge, Virginia	\$870,543	Shifting of track 3 to the west to allow for future third track between platforms and flagging services.	20%	3rd Quarter 2009	Flagging services are ongoing. CSX consultant AECOM approved pedestrian bridge erection plan on 5/29/09. CSX approved work window for 5/30/09 bridge erection. Flagging services provided during erection process.
Woodbridge Station Expansion Construction	Woodbridge, Virginia	\$3,868,700	Construction of second platform, pedestrian crossover and elevator/stair tower.	50%	3rd Quarter 2009	Pedestrian bridge erected on 5/30/09. Current work includes grading and track underdrain installation in platform area. Upcoming work includes construction of platform turnaround footer, grading for track shift, installation of tower stairs, and misc. work on pedestrian bridge.
Woodbridge Station Expansion Construction Engineering Services	Woodbridge, Virginia	N/A	Perform construction engineering services for construction of second platform, pedestrian crossover and elevator/stair tower.	50%	3rd Quarter 2009	Reviewing RFIs and submittals.
Woodbridge Station Expansion Special Inspection Services	Woodbridge, Virginia	N/A	Perform special inspection services for construction of second platform, pedestrian crossover and elevator/stair tower.	50%	3rd Quarter 2009	Performing special inspections and reporting to PWC Special Inspections Branch.
Woodbridge Station Expansion K&R Traffic Analysis	Woodbridge, Virginia	N/A	To obtain traffic data and prepare report of analysis results	100%	4th Quarter 2008	MCV resubmitted report in late October in response to VRE comments. Report finds no significant traffic impacts resulting from construction of proposed Kiss-n-Ride facility.
Woodbridge Station Expansion Land Acquisition	Woodbridge, Virginia	\$4,311,928	Acquisition of 8 parcels, relocation fees, relocation assistance, appraisals, surveys, and legal fees associated with those acquisitions.	100%	Completed	All property has been acquired and tenants and business relocated.
Burke Centre Platform Extension			Extend platform by 200ft and replace existing platform post lights	100%	3rd Quarter 2009	
Burke Centre Platform Extension Design		\$1,200,000	Design platform extension and provide limited construction support	100%	3rd Quarter 2009	Design Completed
Burke Centre Platform Extension Construction		\$1,094,500	General Contractor for construction	4%	2nd Quarter 2010	Project start June 8th; Parking Lot to Close for Staging Area June 1st; Fairfax County Permit Approved; VRE reviews ongoing
Leeland Rd Station Parking Lot Expansion Environmental	Stafford, VA	\$172,700	Prepare an environmental assessment (EA) and Preliminary Engineering for an expansion of the VRE Leeland Road Station Park and Ride Lot.	97%	4th Quarter 2009	FTA currently reviewing EA document; Ongoing coordination with Stafford County
Brooke Station Parking Lot Expansion Environmental	Stafford, VA	\$275,124	Prepare an environmental assessment (EA) and Preliminary Engineering for an expansion of the VRE Brooke Station Park and Ride Lot.	92%	2nd Quarter 2010	Property Owner at Brooke Road granted access to parcel to complete Phase II environmental studies; Consultant returning to field June 1st
Yard Projects						

**VIRGINIA RAILWAY EXPRESS
CAPITAL PROJECTS - PROGRESS REPORT
Projects Underway in FY09 As of
June 1, 2009**

Broad Run Yard Expansion / Maintenance Facility				Design and construction of additional storage tracks and locomotive and train wash facilities.					
Broad Run Yard Expansion / Maintenance Facility Design		\$766,887		Conceptual and final design of S&I building, carwash and track work.	100%	3rd Quarter 2008		Site plan, footing and foundation permit, and retaining wall permit have been approved and were pick-up from PWC on 5/5/2009. AECOM is currently providing on-going construction support.	
Broad Run Yard Expansion / Maintenance Facility Construction	\$8,886,000		Broad Run	Construction of S&I building and track work.	6%	1st Quarter 2010		Phase I (Open Graded Area) is approximately 75% complete and to be completed 6/10/2009. Phase II (Yard Utilities) will start upon the completion of Phase I and is currently scheduled to be completed by mid 7/10/2009.	
Broad Run Yard Expansion / Maintenance Facility Special Inspections		N/A		Special inspection services required by PWC during construction phase.	0%	1st Quarter 2010		Special inspection task order executed on 4/7/2009. Special inspections meeting was held on 4/29/2009. Special inspections will mainly be required during Phase III starting approximately mid 7/2009.	
Broad Run Yard Expansion / Maintenance Facility Design		\$524,628		Design and construction of additional storage tracks and locomotive and train wash facilities.					
Crossroads Yard Expansion / Maintenance Facility Design				Perform design of S&I building and car wash and limited construction support services	100%	4th Quarter 2007		Providing construction support as needed.	
Crossroads Yard Expansion / Maintenance Facility	\$7,157,000		Crossroads	Install compressed air system to be used for air brake testing of train sets and communication lines for Train Wash system.	100%	1st Quarter 2009		Installation work is complete and punch list work is complete. Communication lines to the train wash system have been installed and activated by Verizon. Air compressor, tool air, and brake air systems are fully operational.	
Crossroads Yard Expansion / Air Compressor Procurement		N/A		Procure and oversee installation of air compressor system for new S&I Building and yard air system through Virginia state procurement process (eVA).	100%	1st Quarter 2009		Kaesser is currently providing on-going support to optimize operation of new air compressor system. System fine-tuning expected to be completed by the mid 6/2009.	
Crossroads Yard Expansion / Maintenance Facility Construction		\$6,252,550		Construction of Service and Inspection Building, Train Wash and Additional Storage Tracks within the Crossroads Yard.	100%	1st Quarter 2009		S&I Building is currently in use. Train wash modifications were completed on 3/31/2009 and 4/1/2009 to improve wash performance. System testing has concluded and is currently in use. Permanent Certificate of Occupancy for both buildings was issued on 4/27/2009. Punch list work is on-going and expected to be completed by mid 6/2009.	
Rolling Stock									
New Railcar Procurement Proj No 90-42-16060									
New Railcar Fabrication (50 Cars)	\$2.5 million annual payment	\$90,427,748	System-wide	Construction of OPTION ORDER consisting of 10 cab cars, 20 trailers with toilets and 20 trailers without toilets.	95%	4th Quarter 2010		All 50 cars now in service. Still making field mods and working numerous warranty issues.	
New Railcar Oversight (50 Cars)		\$3,033,212		Perform all engineering oversight and warranty follow-up for construction of 50 car option order	89%	4th Quarter 2010		All work is now warranty work. Requesting a \$700,000 increase in funding for the oversight at the January Board.	
Top Deck Rebuilds Work Management Software Project No 90-57-16270	\$3,372,000	\$2,225,776	System-wide	Top Deck Rebuild for 10 Locomotives	96%	On going Project		V02, V07, V21, V06, V08, V09, V31, V24, V23, V10, V04 and V22 Top deck work has been completed. V20 is the next locomotive scheduled to get a top deck overhauled work	
				Provide software and License agreements to track parts management.	100%	Completed			

**VIRGINIA RAILWAY EXPRESS
CAPITAL PROJECTS - PROGRESS REPORT
Projects Underway in FY09 As of
June 1, 2009**

- 1 -

Work Management Software Training and Set-up	Yards & Warehouse	\$95,000	NIR	Design software modifications for conformity with VRE specific needs and train personnel in use product. Training underway. Transferring all inventory data from QuickBooks to new software.	95%	2nd Quarter 2009	Warehouse converted to VM on May 1, 2008. Work management still not running. Version upgrade scheduled for December 2008; delayed until March 2009; will implement work management portion after version upgrade, purchase and install of VPN gateway for better connection to HQ and performance of remote client desktops
Locomotive Lease	System-wide	\$597,000	\$202,575/year	3-year lease of 3 locomotives	70%	2nd Quarter 2008	Third loco now on VRE property awaiting acceptance testing.
New Locomotive Procurement No. 90-55-16040							
New Locomotive Manufacture (2)	System-wide	\$23,832,103	\$36,413,676	Base Order is for five MP-36 locomotives at \$3,694,922 each (\$18,474,610).	4%	4th Quarter 2012	Locos go into production in July, 2009, 1st loco to arrive in June, 2010, balance between Nov, 2010 and Feb, 2011. Order now stands at 9 locos
New Locomotive Engineering Oversight			\$3,165,548	On site engineering through warranty administration.	6%	4th Quarter 2012	
New Railcar Procurement Proj No 90-66-16060							
New Railcar Fabrication (10 Cars)	System-wide	\$23,689,956	\$22,660,000	Construction of 10 trailer cars without toilets	14%	1st Quarter 2012	Car shells under production in Toyokawa. Cars are to arrive in February and March of 2010.
New Railcar Oversight (10 Cars)			\$1,009,956	Perform all engineering oversight and warranty follow-up for construction of 10 cars	6%	1st Quarter 2012	In-plant inspector on site in Japan.