

VIRGINIA RAILWAY EXPRESS

1500 King Street, Suite 202

Alexandria, VA 22314

P: (703) 684-1001

F: (703) 684-1313

www.vre.org

May 11, 2009

Board Members  
Virginia Railway Express  
Operations Board

Dear Board Members:

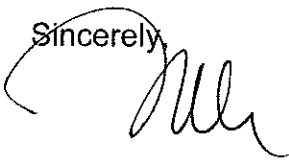
Re: NO MAY 15<sup>th</sup> VRE OPERATIONS BOARD MEETING

Although no meeting is scheduled for May 15<sup>th</sup>, I wanted to update you on the following items:

1. On-time performance: During April we achieved 93.2% on the Manassas Line and 92.7% on the Fredericksburg Line. I'm confident we have a good handle on our mechanical process which should prevent any further large scale mechanical failure of our locomotives.
2. Ridership: Cumulative ridership is 6.8% higher than last fiscal year through April. The growth rate continues to slow. As you know we have a 6% fare increase scheduled for July 1<sup>st</sup> and at this time I'm not sure how the fare increase will affect our ridership level or its further growth. I continue to watch both very carefully.
3. Issued the Request for Proposal: We issued RFP on May 8<sup>th</sup> for a train service and mechanical service contractor to initiate service when our contract with Amtrak expires on June 30, 2010. I will be able to brief you with more information on this at the June meeting.

Attached is the CEO report for April. I will see you in June with a full board agenda.

Sincerely,



Dale Zehner  
Chief Executive Officer

cc: Rick Taube  
Al Harf  
Stephen A. MacIsaac, Esquire



RECEIVED  
5-12-09



# CHIEF EXECUTIVE OFFICER'S REPORT

May 2009

## MONTHLY DELAY SUMMARY

	January	February	March	April
<b>System wide</b>				
Total delays	39	36	84	45
Average length of delay (mins.)	21	17	21	15
Number over 30 minutes	7	4	14	4
Days with Heat Restrictions/Total days	0/18	0/19	0/22	2/22
On-Time Performance	93.1%	93.5%	86.8%	92.9%
<b>Fredericksburg Line</b>				
Total delays	21	19	49	21
Average length of delay (mins.)	22	17	21	15
Number over 30 minutes	4	2	10	1
On-Time Performance	91.8%	92.3%	82.9%	92.7%
<b>Manassas Line</b>				
Total delays	18	17	35	24
Average length of delay (mins.)	21	16	21	15
Number over 30 minutes	3	2	4	3
On-Time Performance	94.2%	94.4%	90.1%	93.2%

## SYSTEM RIDERSHIP

The total number of April trips in 2009 was 2.0% higher than in April 2008. The growth in ridership has leveled off more in April than in any other month due to spring break and Easter vacations, which were in March last year. The year-to-date gain through April in ridership was 6.8%.

## SYSTEM ON TIME PERFORMANCE

System on time performance has improved significantly over last month. Mechanical difficulties have decreased significantly. After the poor performance in the month of March, we re-evaluated our maintenance program with all of our mechanical contractors. We are pleased with the end result of over 90% on-time for both lines. We have experienced over 90% on-time performance three out of the first four calendar months this year.

## VISIT FROM LYNCHBURG AND CHARLOTTESVILLE DELEGATION

On Wednesday, April 29, VRE hosted a delegation from Lynchburg and Charlottesville to show them our rail operation. The delegation, which was comprised of Rex Hammond, President and CEO, Lynchburg Regional Chamber, Turner Perrow, Jr., Councilman for the City of Lynchburg, Rebecca White, Director of Transportation for the University of Virginia, and Corrin Hoffmann, Program Manager, Lynchburg Regional Chamber.

VRE staff escorted the group on Train 332 for a train ride from our Broad Run Station to our offices in Alexandria. We boarded a Manassas line train so that the delegation could see for themselves first-hand what commuter rail service was and the territory their train would be operating over.

Once in Alexandria, we toured the VRE headquarters, introduced them to all of the staff and then walked them through the various components of our daily operation in order for them to better understand the complexities of running a rail operation. In the end, the meeting proved very beneficial because it helped to shed light on what the Lynchburg train service should expect operationally, added greater understanding of existing needs to integrate into the rail network, and most importantly created a very positive working relationship between VRE and those members who will be active in the daily operation of the Lynchburg-Charlottesville train service.

### **VRE NOW ALLOWING FULL SIZE BICYCLES ON BOARD**

Starting Friday May 15th, VRE will change its policy on bicycles and allow full size bikes on-board as a pilot program. This will be just in time for our riders to join in on "Bike to Work Day," which is May 15th. Bicycles will only be allowed on the last three northbound, the mid-day, and the last three southbound trains. They will also only be allowed to board on the northernmost car, or cab car, and utilize the south end, four folding seat bench, with a maximum of two bikes tethered to the area. Bicyclists will be responsible for tethering their own bikes with bungee cords to the eyelets on the seats, but will have priority to use the bench. The full policy is available on our website.

### **PARKING EXPANSION STATUS AT BROOKE AND LEELAND ROAD**

#### **At Brooke**

The parking project is temporarily on hold for now until VRE is allowed access back on the selected property to conduct further test pitting, which is what is required to conclude the environmental work.

#### **At Leeland**

We are in the process of submitting the environmental assessment (EA) to FTA for their approval. Once approved, it can be put out for bid. This expansion is expected to provide 200 additional parking spaces.

### **MEET THE MANAGEMENT**

The annual "Meet the Management" events started up again in April. The following schedule provides a list of remaining dates and locations.

May 13	Fredericksburg (am)	July 1	Burke Centre (am)
May 20	Broad Run (am)	July 8	Rippon (am)

May 27	Leeland Road (am)	July 15	Rolling Road (am)
June 3	Manassas (am)	July 22	Woodbridge (am)
June 10	Brooke (am)	July 29	Backlick Road (am)
June 17	Manassas Park (am)	August 5	Lorton (am)
June 24	Quantico (am)		

### **LOCOMOTIVE UPDATE**

MotivePower is in the process of buying raw materials now for the 9 new locomotives. On April 3, VRE signed the amended agreement with Motive Power for four additional locomotives. The nine new units will start arriving by October of 2010. VRE is also working with the Commonwealth to apply match toward the Omnibus appropriation signed by the President in March. This would allow one or two more units to be ordered, bringing us halfway to our goal of 20 locomotives. I intend to request authority to order the 10<sup>th</sup> and 11<sup>th</sup> locomotives at our June meeting.

### **CUSTOMER SERVICE SURVEY**

Our Annual Customer Service Survey was conducted on Wednesday, May 6, 2009. This is the survey where customers rate our overall performance. We refer to this survey as the "VRE Report Card". VRE representatives were available on every morning train to assist with distribution, collect the surveys and answer any questions. Results will be available later this summer.

### **GAINESVILLE-HAYMARKET EXTENSION WORKSHOP**

A meeting was held on Tuesday, May 5 to present the findings of the Gainesville-Haymarket Feasibility Study and Alternatives Analysis to the public. Approximately 25 people were in attendance. Discussion at the meeting included questions about the frequency of service on the proposed extension, cost and timeline to implement, sources of funding for the project, and potential impacts of the extension on existing VRE service and stations. The majority of the attendees expressed support for the project and desire to see expanded VRE service.

### **PUBLIC OUTREACH**

On April 16, 19 national travel writers rode the Fredericksburg and Manassas lines to Union Station and back out again in the evening. There was a well represented group from Travel and Leisure Magazine, the LA Times, the Boston Globe, Ladies Home Journal – giving VRE national exposure. The process went so well that the touring association will be including VRE as a regular feature now, showcasing VRE to a national audience three times a year.

**MONTHLY PERFORMANCE MEASURES – APRIL 2009**

<b>MONTHLY ON-TIME PERFORMANCE</b>	<b>ON-TIME PERCENTAGE</b>
April Fredericksburg OTP Average	92.7%
April Manassas OTP Average	93.2%
<b>VRE APRIL OVERALL OTP AVERAGE</b>	<b>92.9%</b>

<b>RIDERSHIP YEAR TO DATE</b>	<b>RIDERSHIP</b>
VRE FY 2009 Passenger Totals	3,199,780
VRE FY 2008 Passenger Totals	2,994,850
<b>PERCENTAGE CHANGE</b>	<b>6.8%</b>

<b>RIDERSHIP MONTH TO MONTH COMPARISON</b>	
<b>DESCRIPTION</b>	<b>MONTHLY RIDERSHIP</b>
APRIL 2009	343,696
APRIL 2008	336,860
<b>PERCENTAGE CHANGE</b>	<b>2.0%</b>
<b>SERVICE DAYS (CURRENT/PRIOR)</b>	<b>22 / 22</b>

# Chief Executive Officer's Ridership Report



**MAY 2009**

*As Reported to the VRE Operations Board  
April 17, 2009*

# Monthly Ridership and OTP: April 2009

Date	Manassas AM	Manassas PM	Total Manassas	Actual OTP TD	Fred'burg AM	Fred'burg PM	Fred'burg Total	Actual OTP TD	Total Trips	Actual OTP TD	
1	4,054	3,940	7,994	75%	3,932	4,575	8,567	77%	16,561	76%	
2	4,000	4,103	8,103	100%	3,911	4,266	8,177	100%	16,280	100%	
3	3,576	3,030	6,606	88%	3,790	3,814	7,604	92%	14,210	90%	
4											
5											
6	3,815	3,660	7,475	88%	3,808	3,969	7,777	100%	15,252	93%	
7	3,832	3,415	7,247	94%	3,835	4,354	8,189	85%	15,436	90%	
8	3,512	3,398	6,910	81%	4,099	4,208	8,307	77%	15,217	79%	
9	3,401	3,475	6,876	94%	3,998	4,406	8,404	100%	15,280	97%	
10	2,518	2,622	5,140	100%	3,464	3,884	7,348	85%	12,488	93%	
11											
12											
13	3,665	3,687	7,352	100%	4,037	3,730	7,767	92%	15,119	97%	
14	3,943	4,125	8,068	100%	3,813	4,097	7,910	100%	15,978	100%	
15	4,088	4,104	8,192	100%	3,817	4,037	7,854	92%	16,046	97%	
16	3,921	4,000	7,921	94%	3,939	3,958	7,797	100%	15,718	97%	
17	3,099	3,019	6,118	100%	3,424	3,395	6,819	100%	12,937	100%	
18											
19											
20	3,760	3,816	7,576	88%	3,896	3,985	7,881	100%	15,457	93%	
21	4,153	4,262	8,415	100%	4,201	4,659	8,860	92%	17,275	97%	
22	3,914	3,762	7,676	88%	4,185	4,603	8,788	100%	16,464	93%	
23	4,097	4,017	8,114	100%	4,433	4,365	8,798	100%	16,912	100%	
24	3,166	2,959	6,125	100%	3,719	3,656	7,375	100%	13,500	100%	
25											
26											
27	3,814	3,772	7,586	81%	4,141	4,293	8,434	46%	16,020	66%	
28	4,043	3,936	7,979	88%	4,147	4,565	8,712	85%	16,691	86%	
29	3,951	3,829	7,780	94%	4,086	4,512	8,598	92%	16,378	93%	
30	4,137	3,936	8,073	100%	4,144	4,359	8,503	100%	16,576	100%	
	82,459	80,867	163,326	93%	86,779	91,690	178,469	92%	341,795	92%	
	Adjusted total: 163,384				Adjusted Total: 180,312			Adjusted Total: 343,696			

# of Service Days: 22  
 Manassas Daily Avg. Trips: 7,424  
 Fred'burg Daily Avg. Trips: 8,112  
 Total Avg. Daily Trips: 15,536

Total Trips This Month: 343,696  
 Prior Total FY-2009: 2,856,084  
 Total Trips FY-2009: 3,199,780  
 Total Prior Years: 40,598,336  
 Grand Total: 43,798,116

Note: Adjusted Averages & Totals include all VRE trips taken on Amtrak trains, but do not include "S" schedule days. \* designates "S" schedule day

## Monthly Ridership Changes: Fiscal Year 2008 vs. 2009

Current Month	MANASSAS				FREDERICKSBURG			
	Avg Daily FY2008	Avg Daily FY2009	% change	Avg Daily FY2008	Avg Daily FY2009	% change	Current Total	% change
July	6513	7003	7.52%	7393	8388	13.46%	15391	10.68%
August	6405	6885	7.49%	7379	8316	12.70%	15201	10.28%
September	6847	7495	9.46%	7652	8720	13.96%	16215	11.84%
October	6973	7491	7.43%	7754	8538	10.11%	16029	8.84%
November	6894	7330	6.32%	7707	8439	9.50%	15769	8.00%
December	6081	7158	17.71%	7235	8584	18.65%	15742	18.22%
January	6978	7610	9.06%	8148	8501	4.33%	16111	6.51%
February	6842	7578	10.76%	8018	8375	4.45%	15953	7.36%
March	6812	7568	11.10%	8050	8194	1.79%	15762	6.06%
April	6988	7427	6.28%	8324	8196	-1.54%	15623	2.03%
May	6832			8094			0	
June	7123			8504			0	
Average growth			9.31%			8.74%		8.98%

\*Ridership figures are shown in passenger trips. Includes Amtrak cross honor train riders.

\*\*Average daily ridership for May 2008 does not include 5/30/08 due to planned service disruption.

# Chief Executive Officer's Report



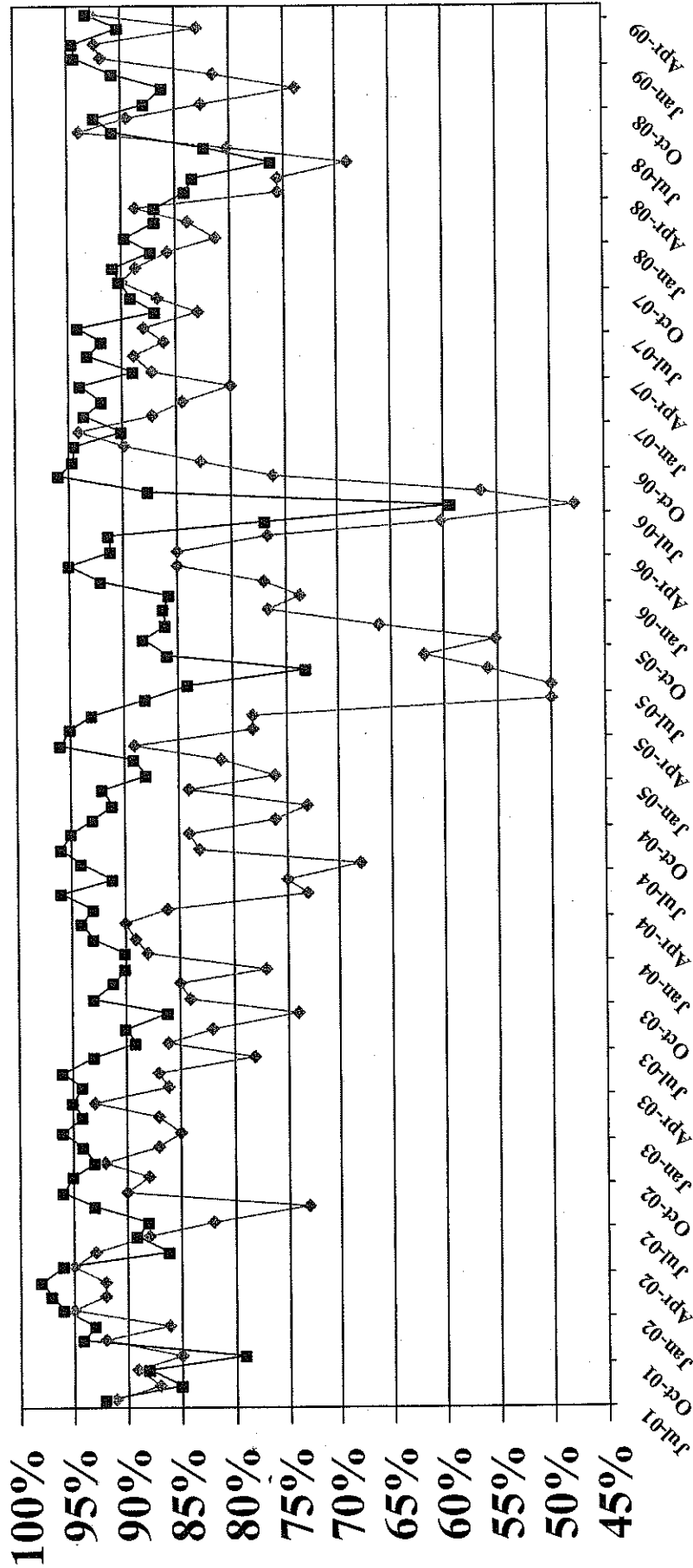
## Chief Executive Officer's On-Time Performance

**MAY 2009**

*As Reported to the VRE Operations Board  
April 17, 2009*

# On-Time Performance

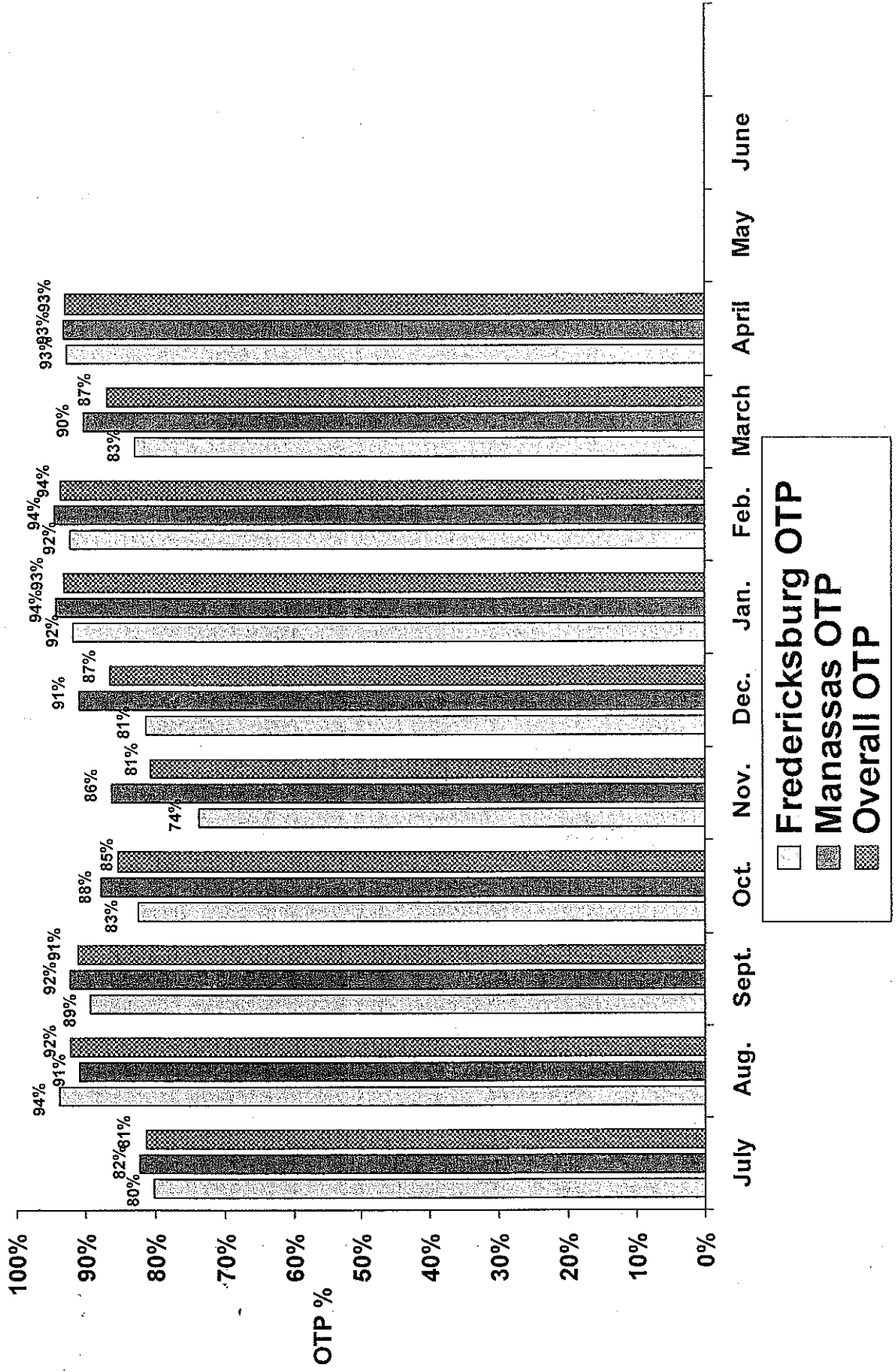
July 2001 – April 2009



◆ Frederickburg Line    ■ Manassas Line

# Average On-Time Performance

## FY-2009



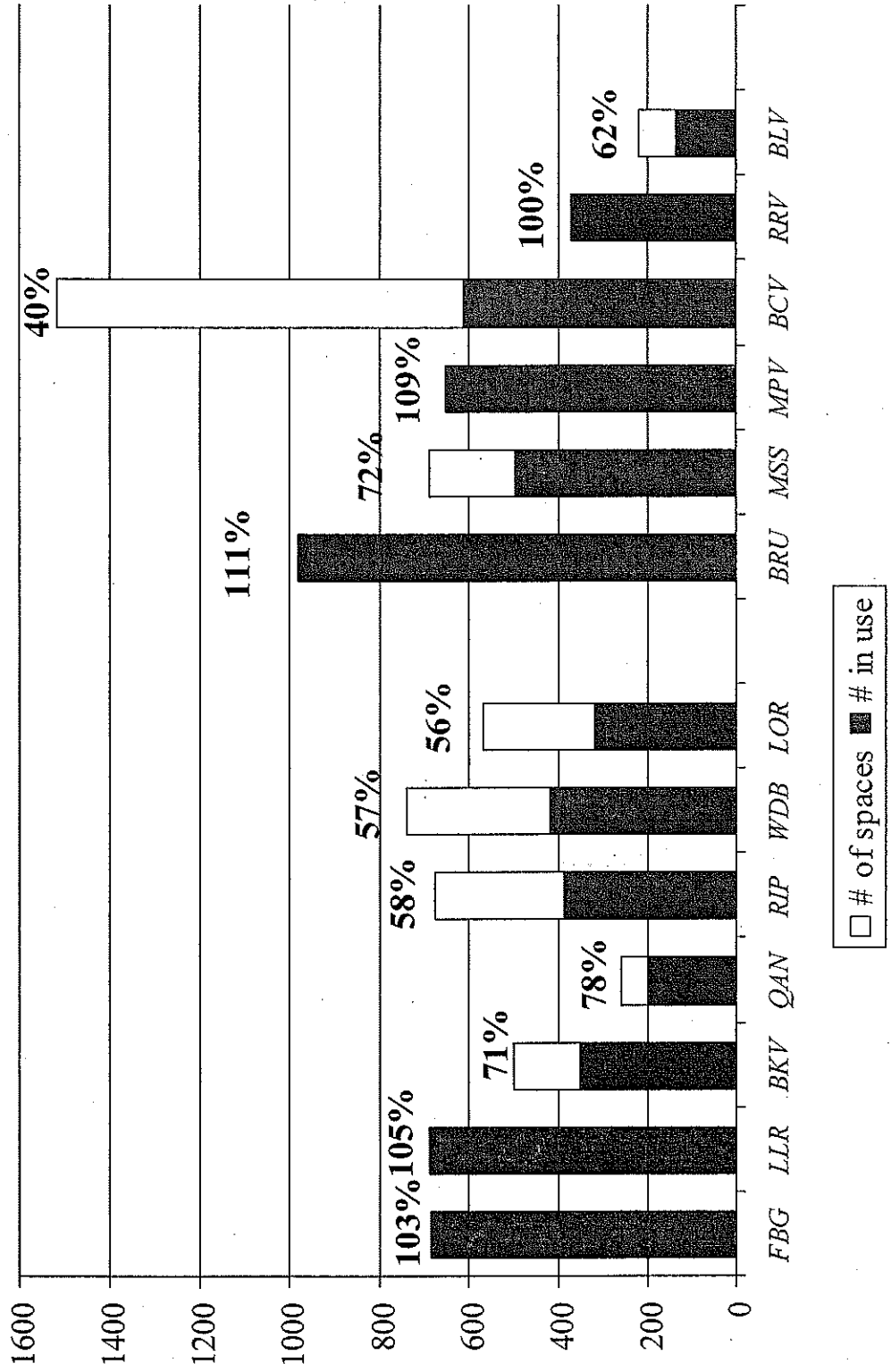
# Chief Executive Officer's Parking Utilization



**MAY 2009**

*As Reported to the VRE Operations Board  
April 17, 2009*

# Parking Lot Utilization: April 2009



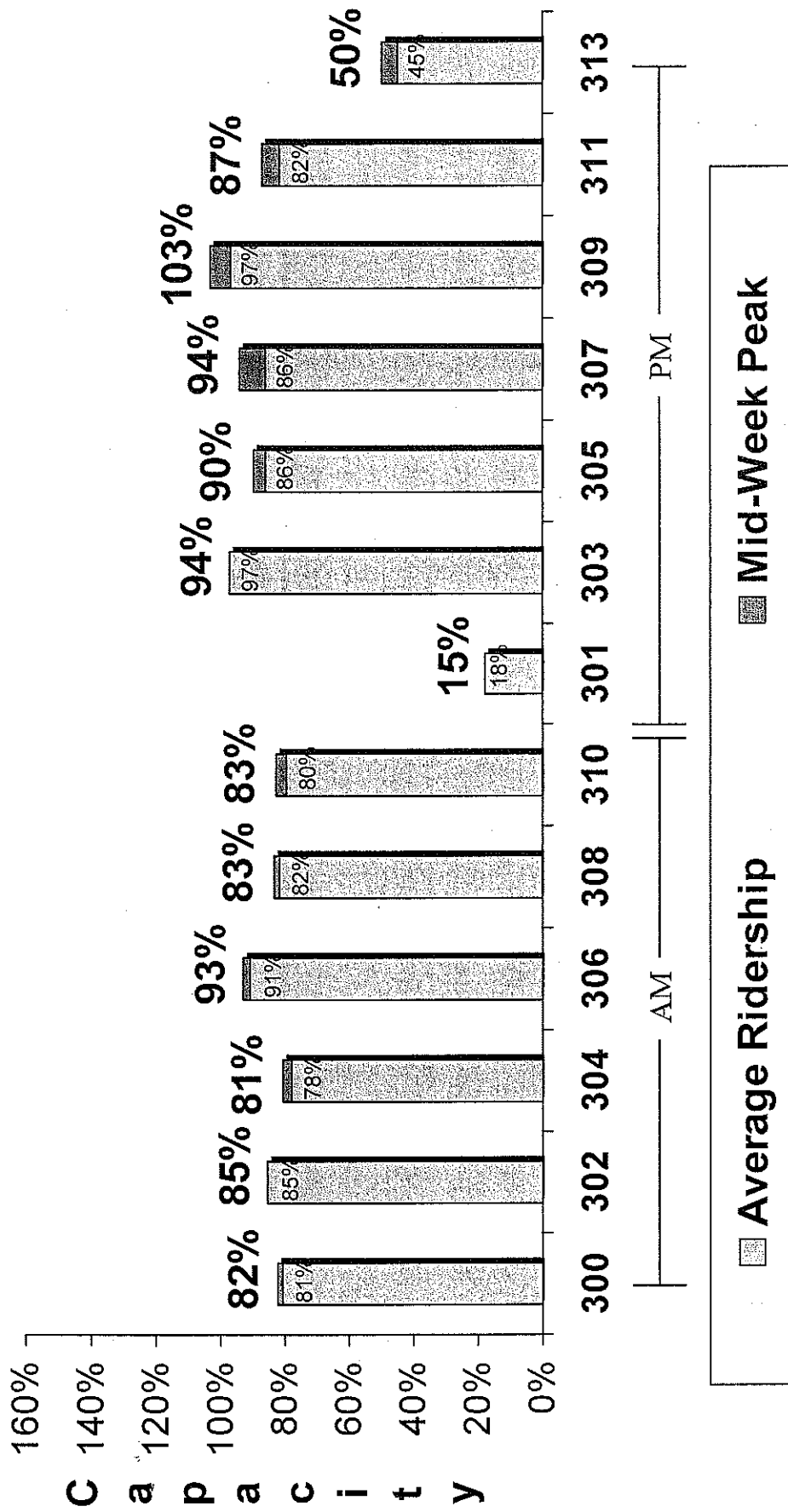
# Chief Executive Officer's Train Utilization



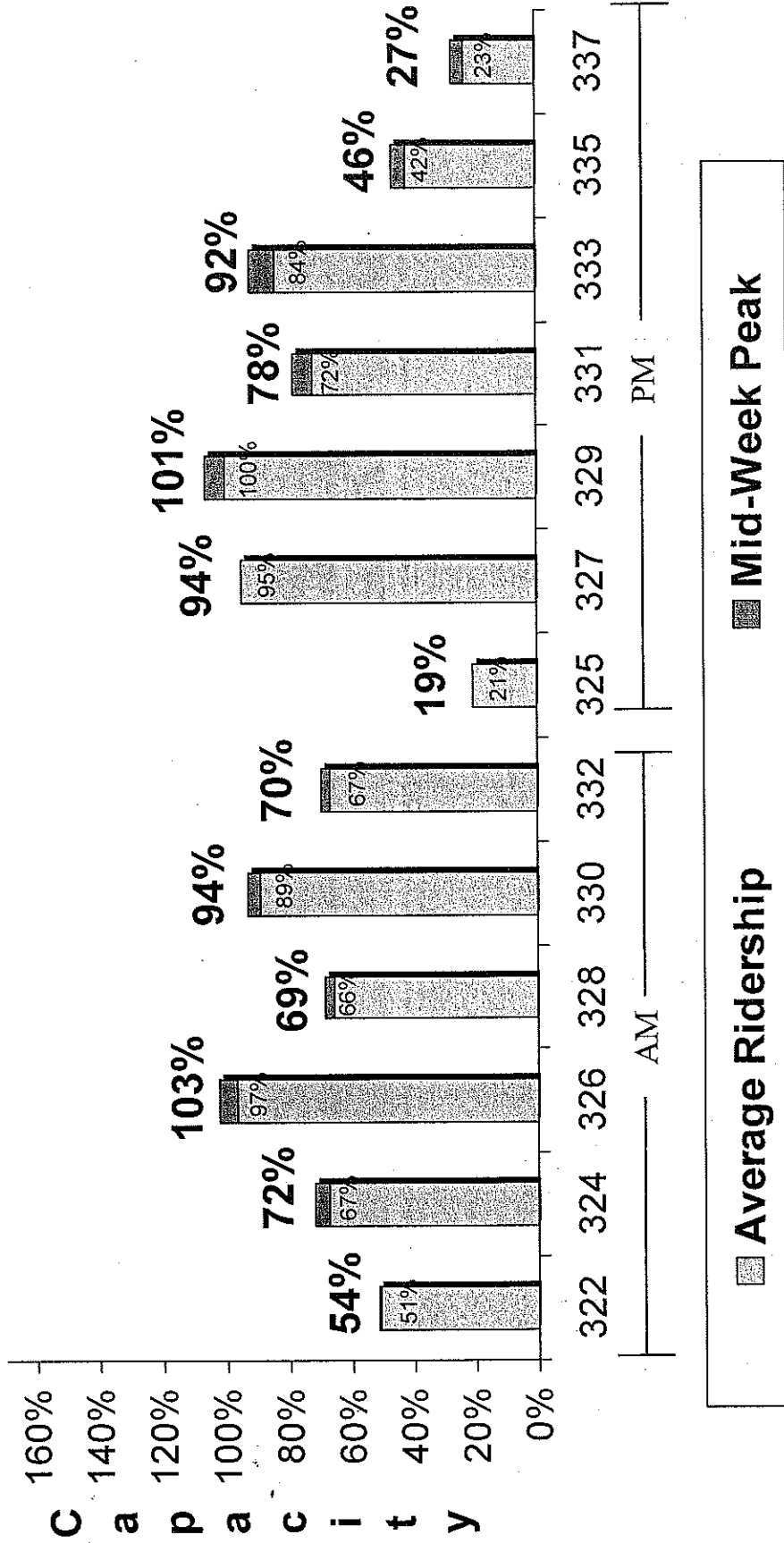
**MAY 2009**

*As Reported to the VRE Operations Board  
April 17, 2009*

# Train Utilization: Fredericksburg Line – April 2009



# Train Utilization: Manassas Line – April 2009



Legend:

- Average Ridership
- Mid-Week Peak

# Chief Executive Officer's Capital Project Summary



**MAY 2009**

*As Reported to the VRE Operations Board  
April 17, 2009*

**VIRGINIA RAILWAY EXPRESS  
CAPITAL PROJECTS - PROGRESS REPORT  
Projects Underway in FY09 As of  
May 1, 2009**

PROJECT	LOCATION	TOTAL ADOPTED CIP BUDGET THRU FY09	TOTAL BOARD APPROVED FUNDS	PROJECT DESCRIPTION	PERCENTAGE (%) OF TOTAL PROJECT TASK COMPLETION	PROJECT COMPLETION DATE	STATUS
<b>Track and Infrastructure</b>							
Cherry Hill Third Track	Cherry Hill, Virginia	\$2,500,000		This project includes the development of VRE's 13th station on the Fredericksburg Line. The VRE station is part of a larger development project on the Cherry Hill Peninsula. Proposed 3rd track will extend from MP 72.0 to MP 83.4.			
Cherry Hill Third Track PE/EA			\$1,961,709	Prepare an environmental assessment and preliminary design for track alternatives and supporting structures.	40%	3rd Quarter 2009	Preferred track alignment alternative submitted to CSX for review. No formal feedback to date. Geotech field work on hold pending feedback from CSX on alignment options.
Cherry Hill Third Track PE/EA Support			\$272,747	Provide flagging services and design reviews.	40%	3rd Quarter 2009	CSX continues to provide flagging, attend meetings and review design alternatives. Formal request to comment on preferred track alternative provided to CSX.
L'Enfant Storage Track				Construct approximately 1400 ft storage track just north of the existing platform and provide wayside power for two train sets.			
L'Enfant Storage Track Construction			\$630,000	Construct approximately 1400 ft storage track just north of the existing platform	100%	Completed	Siding construction completed in late September. Passed CSX inspection upon completion. Paid final invoice (\$139,198.17).
L'Enfant Storage Track Wayside Power Design	L'Enfant	\$825,000	N/A	Design of wayside power for two train sets.	90%	2nd Quarter 2009	HDR to modify design based on pending CSX approval of conduit installation on catenary tower vs. under tracks. Grant extension until 9/30/09 approved by FEMA. Additional grant funds (\$300k) expected to be available shortly - will have until May 31, 2010 to use funds. CSX Wireline department indicated preliminary approval to install conduits and air line on existing catenary tower vs. under tracks. VRE currently preparing plan for CSX submittal. Location of compressor building will shift to east side of tracks to eliminate track clearance issues.
L'Enfant Storage Track Wayside Power Construction			N/A	Construction of Wayside Power	20%	3rd Quarter 2009	
L'Enfant Storage Track Wayside Power Air Compressor Procurement			N/A	Procure and oversee installation of air compressor equipment for new storage track air system through Virginia state procurement process (eVA).	90%	3rd Quarter 2009	Procurement process has been completed. Air compressor system has been delivered and is being stored at Crossroads Yard.
<b>Planning Studies and Communications Projects</b>							
SmartTrip Technical Support Proj. No. 1310 020	VRE offices/ system wide	\$155,000	\$154,285	Technical assistance for the design, procurement, installation and testing of a SmartTrip compatible system for VRE.	31%	4th Quarter 2010	Negotiating final contract with S&B; S&B comments will be addressed in special T&C. Existing contract general terms and conditions will carry forward to contract amendment. Smart Benefits pilot continues.
WUT Train Movement Study	Washington, D.C.	\$180,000	\$179,677	Investigate train movements in WUT, Ivy City and Coach Yard and allocate cost to utilize the facility.	99%	4th Quarter 2008	Negotiations underway.

**VIRGINIA RAILWAY EXPRESS  
CAPITAL PROJECTS - PROGRESS REPORT  
Projects Underway in FY09 As of  
May 1, 2009**

2-Way Radio System				To install a radio communication system that will allow monitoring of train communication and communication with trains during emergencies.					
2-Way Radio System Design		\$98,000		Design and develop RFP for new two-way radio system	100%	Completed		Design completed.	
2-Way Radio System Construction	System-wide	\$346,400		Installation of new two-way radio system	97%	1st quarter, 2010		System encountering interference. Bearcom is testing whether system will work in current location (likely to suggest alternate location in Alexandria); Received staff comments from Stafford County regarding rezoning submittals; Currently working on responses.	
Gainesville Haymarket MIS	New Line	\$1,537,338		Develop expansion alternatives for new service to Gainesville and Haymarket	90%	4th Quarter 2009		Draft Alternatives Analysis report completed 2/27/09. Draft Feasibility Study completed 3/6/09. Public meeting scheduled for 5/5/09.	
<b>Commuter Station Projects</b>									
Fredericksburg Viaduct Repairs									
Fredericksburg Viaduct Repairs Design	Fredericksburg	NA	\$2,606,000	Develop scope of work to address spalling concrete and drainage with available funding	100%	Completed		Final report submitted to VRE on May 15, 2007.	
Manassas City Parking Deck		\$148,281		Develop detailed design to address necessary repairs	35%	2nd Quarter 2009		Met with STV to review prelim 60% design. Formal 60% expected by end of April. Received comments from DHR and will address.	
Manassas City parking Deck Environmental		\$170,675		Construction of a 520 space parking garage in the City of Manassas.	100%	Completed		Completed	
Manassas City parking Deck Design		\$598,534		Preliminary work (site location/environmental) for future garage parking.	100%	4th Quarter 2008		PB resubmitted revised as-built to City of Manassas as requested for issuance of Certificate of Occupancy.	
Manassas City parking Deck Construction	Manassas, Virginia	\$9,189,400	\$12,750,000	Design and limited construction administration for 520+ space parking structure.	98%	2nd Quarter 2009		Punch list items essentially complete, with exception of minor leak repairs to occur shortly. City of Manassas Community Development approved canopy extension plans. Plans have received preliminary approval by Building Department. VRE coordinating with NS for provision of flagman.	
Manassas City parking Deck Security Camera Installation		\$0		Construction of Parking Garage	5%	2nd Quarter 2009		Site survey completed; drawings approved by VRE and City of Manassas. Quote obtained from sole source ADT Advanced Integration. Received Board approval at February meeting. Preconstruction meeting held 3/24/09 followed by site visit on 3/26/09. Work to begin once paperwork completed - estimated six weeks for installation.	
Manassas City Parking Deck Electrical Line Relocation		\$416,000		Relocate high voltage line along Prince William Street	100%	Completed		Relocation of new pole and transmission line work complete. Paid final Dominion invoice (\$157,060.23).	

**VIRGINIA RAILWAY EXPRESS  
CAPITAL PROJECTS - PROGRESS REPORT  
Projects Underway in FY09 As of  
May 1, 2009**

Woodbridge Station Expansion				This project includes a Kiss & Ride, Second Platform & Pedestrian Crossover -- which will join the parking garage and Second Platform.					
Woodbridge Station Expansion Design	Woodbridge, Virginia		\$910,000	Design and limited construction administration for second platform, pedestrian crossover and elevator/stair tower.	100%	3rd Quarter 2007	Improvements to Route 1 in VDOT right-of-way eliminated, along with sidewalk connection from Route 1 to elevator/stair tower. These improvements to be addressed during later phase of project. Received PWC final site plan approval on 5/13/08.		
Woodbridge Station Expansion Track Relocation	Woodbridge, Virginia		\$870,543	Shifting of track 3 to the west to allow for future third track between platforms and flagging services.	10%	3rd Quarter 2009	Flagging services are ongoing. VRE/Costello met with CSX to discuss pedestrian bridge erection procedures. Costello submitted written request to VRE for 5/30/09 bridge erection - VRE forwarded request to CSX.		
Woodbridge Station Expansion Construction	Woodbridge, Virginia	\$7,013,000	\$3,868,700	Construction of second platform, pedestrian crossover and elevator/stair tower.	40%	3rd Quarter 2009	Current work includes completion of storm drainage system and erection of tower steel. Upcoming work includes grading for track shift, completion of tower steel erection and assembly of bridge structure on ground adjacent to parking garage. Bridge scheduled to be lifted into place on 5/30/09.		
Woodbridge Station Expansion Construction Engineering Services	Woodbridge, Virginia		N/A	Perform construction engineering services for construction of second platform, pedestrian crossover and elevator/stair tower.	40%	3rd Quarter 2009	Reviewing RFIs and submittals.		
Woodbridge Station Expansion Special Inspection Services	Woodbridge, Virginia		N/A	Perform special inspection services for construction of second platform, pedestrian crossover and elevator/stair tower.	40%	3rd Quarter 2009	Performing special inspections and reporting to PWC Special Inspections Branch.		
Woodbridge Station Expansion K&R Traffic Analysis	Woodbridge, Virginia		N/A	To obtain traffic data and prepare report of analysis results	100%	4th Quarter 2008	MCV resubmitted report in late October in response to VRE comments. Report finds no significant traffic impacts resulting from construction of proposed Kiss-n-Ride facility.		
Woodbridge Station Expansion Land Acquisition	Woodbridge, Virginia	\$4,346,000	\$4,311,928	Acquisition of 8 parcels, relocation fees, relocation assistance, appraisals, surveys, and legal fees associated with those acquisitions.	100%	Completed	All property has been acquired and tenants and business relocated.		
Burke Centre Platform Extension				Extend platform by 200ft and replace existing platform post lights	100%	3rd Quarter 2009			
Burke Centre Platform Extension Design		\$1,200,000	\$100,760	Design platform extension and provide limited construction support	100%	3rd Quarter 2009	Design Completed		
Burke Centre Platform Extension Construction			\$1,094,500	General Contractor for construction	3%	2nd Quarter 2010	Fairfax County permit anticipated Week of May 11th. Norfolk Southern is scheduling flagger. Project tentative start date in field May 25th. Submittals currently under review.		
Leeland Rd Station Parking Lot Expansion Environmental	Stafford, VA	\$959,000	\$172,700	Prepare an environmental assessment (EA) and Preliminary Engineering for an expansion of the VRE Leeland Road Station Park and Ride Lot.	97%	4th Quarter 2009	Submitted EA draft to FTA. Met with Stafford County to discuss options.		
Brooke Station Parking Lot Expansion Environmental	Stafford, VA		\$275,124	Prepare an environmental assessment (EA) and Preliminary Engineering for an expansion of the VRE Brooke Station Park and Ride Lot.	92%	2nd Quarter 2010	Need access to 1717 Brooke Road to continue Phase II studies; Pursuing legal letter to gain access. Met with Stafford County to discuss options.		

Note 1: Total adopted CIP budget will be revised upon receipt of FY09 grant.

**VIRGINIA RAILWAY EXPRESS  
CAPITAL PROJECTS - PROGRESS REPORT  
Projects Underway in FY09 As of  
May 1, 2009**

Yard Projects									
Project Name	Project Description	Estimated Cost	FY09 Budget	Progress %	Key Milestones / Status	Start Date	End Date	Notes	Reporting Period
Broad Run Yard Expansion / Maintenance Facility	Design and construction of additional storage tracks and locomotive and train wash facilities.	\$766,887	\$8,886,000	100%	Conceptual and final design of S&I building, carwash and track work.	3rd Quarter 2008		Site plan, footing and foundation permit, and retaining wall permit have been approved and were pick-up from PWC on 5/6/2009. AECOM is currently providing on-going construction support.	
Broad Run Yard Expansion / Maintenance Facility Construction	Construction of S&I building and track work.	\$4,659,500		0%		1st Quarter 2010		Contract has been executed by VRE and Costello and insurance requirements are now complete. Pre-construction meeting held on 4/2/2009. NTP has been issued for 5/11/2009.	
Broad Run Yard Maintenance Facility Special Inspections	Special inspection services required by PWC during construction phase.	N/A		0%		1st Quarter 2010		Special inspection task order executed on 4/7/2009. Special inspections meeting was held on 4/29/2009.	
Crossroads Yard Expansion / Maintenance Facility	Design and construction of additional storage tracks and locomotive and train wash facilities.	\$524,628		100%	Perform design of S&I building and car wash and limited construction support services	4th Quarter 2007		Providing construction support as needed.	
Crossroads Yard Expansion / Maintenance Facility Yard Air Installation	Install compressed air system to be used for air brake testing of train sets and communication lines for Train Wash system.	N/A	\$7,157,000	100%		1st Quarter 2009		Installation work is complete and punch list work is complete. Communication lines to the train wash system have been installed and activated by Ventzon. Air compressor, tool air, and brake air systems are fully operational.	
Crossroads Yard Expansion / Air Compressor Procurement	Procure and oversee installation of air compressor system for new S&I Building and yard air system through Virginia state procurement process (eVA).	N/A		100%		1st Quarter 2009		Kaesser is currently providing on-going support to optimize operation of new air compressor system. System fine-tuning expected to be completed by the end of 5/2009.	
Crossroads Yard Expansion / Maintenance Facility Construction	Construction of Service and Inspection Building, Train Wash and Additional Storage Tracks within the Crossroads Yard.	\$6,252,550		100%		1st Quarter 2009		S&I Building is currently in use. Train wash modifications were completed on 3/31/2009 and 4/1/2009 to improve wash performance. System testing has concluded and is currently in use. Permanent Certificate of Occupancy for both buildings was issued on 4/27/2009. Punch list work is on-going and expected to be completed by the end of 5/2009.	
Rolling Stock									
New Railcar Procurement Proj No 90-42-16060									
New Railcar Fabrication (50 Cars)	Construction of OPTION ORDER consisting of 10 cab cars, 20 trailers with toilets and 20 trailers without toilets.	\$90,427,748	\$2.5 million annual payment	95%		4th Quarter 2010		All 50 cars now in service. Still making field mods and working numerous warranty issues.	
New Railcar Oversight (50 Cars)	Perform all engineering oversight and warranty follow-up for construction of 50 car option order	\$3,033,212		89%		4th Quarter 2010		All work is now warranty work. Requesting a \$700,000 increase in funding for the oversight at the January Board.	
Top Deck Rebuilds	Top Deck Rebuild for 10 Locomotives	\$2,225,776	\$3,372,000	96%		On going Project		V02, V07, V21, V06, V08, V09, V31, V24, V23, V10, V04 and V22 Top deck work has been completed. V20 is the next locomotive scheduled to get a top deck overhauled work	

